



Gloss Finish

For Masonry, Wood & Metal

AkzoNobel

For Unmatched Protection Of
All Wood & Metal Surfaces

- Highly Washable
- Mirror Like Finish
- Non Yellowing
- For Both Interior & Exterior





Gloss Finish

For Masonry, Wood & Metal



Brilliant White 0101



Off White 0032



County Cream 0057



Clay 4254



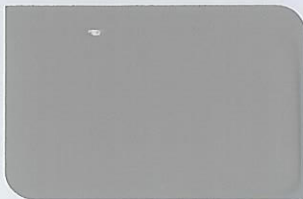
Antelope 4253



Pumice 4256



Oyster 3133



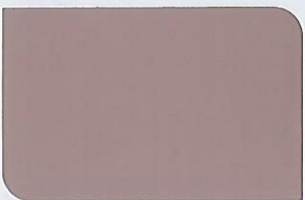
Court Grey 0676



Light Grey 4009



Smoke Grey 0492



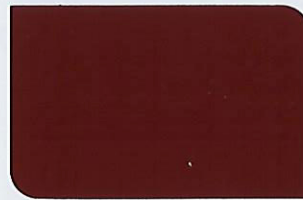
Coriander 4255



Signal Red 0437



Post Office Red 0438



Red Oxide 3139



Brown 4012



Sea Green 2229



Ocean Turquoise 2474



Comet Blue 4008

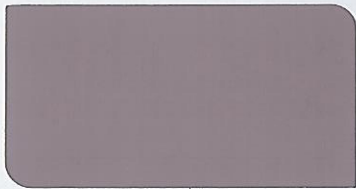


Light Blue 4003



Pacific Blue 0612

Also available in Black 0122



Colour Of The Year 2018

Heart Wood

10YR 28/072

Find Your Perfect Colour & Dulux POST Machine Will Mix It For You!

With over 2000 colours to choose from, you can easily get the colour you want, in the finish you need.



Beige 4013



Pale Cream 4004



Atlantis 4257



Dark Admiralty Grey 0105



Golden Brown 0143



Buckingham Green 0202



Conker 3131



Eau-de-nil 0119



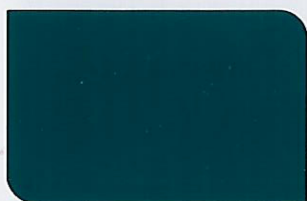
Signal Green 4001



Oxford Blue 0113

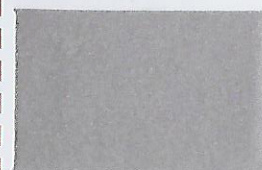


Spring Green 4002



Scarab 3138

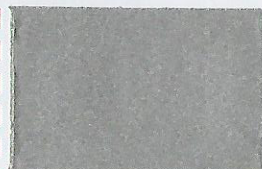
Metallic Finishes



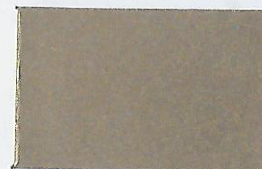
Sparkling Silver 5102



Ocean Blue 5108



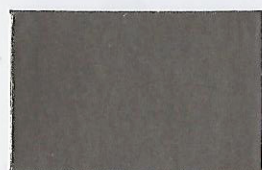
Shiny Green 5104



Gold Dust 5107



Champagne 5105



Brown Sheen 5103



Ash White 1920



Copper 5106

Shades displayed are indicative and do not depict actual paint colour.

 **Dulux**  let's colour

Gloss Finish

Dulux Gloss Finish is a high quality solvent based super gloss enamel, suitable for use on all types of interior & exterior wood and metal surfaces. Dulux Gloss Finish gives a smooth mirror like finish and has excellent durability.

01-01-2018

Colour Solutions
over
2000
SHADES
Instantly Available



Contact us

 **0800-DULUX (38589)**

 **www.dulux.com.pk**

 **www.facebook.com/duluxpakistan**



The AkzoNobel Logo, ICI Roundel, Dulux & the Flourish are trade marks of the AkzoNobel Group © AkzoNobel 2011

DB_00072_030314